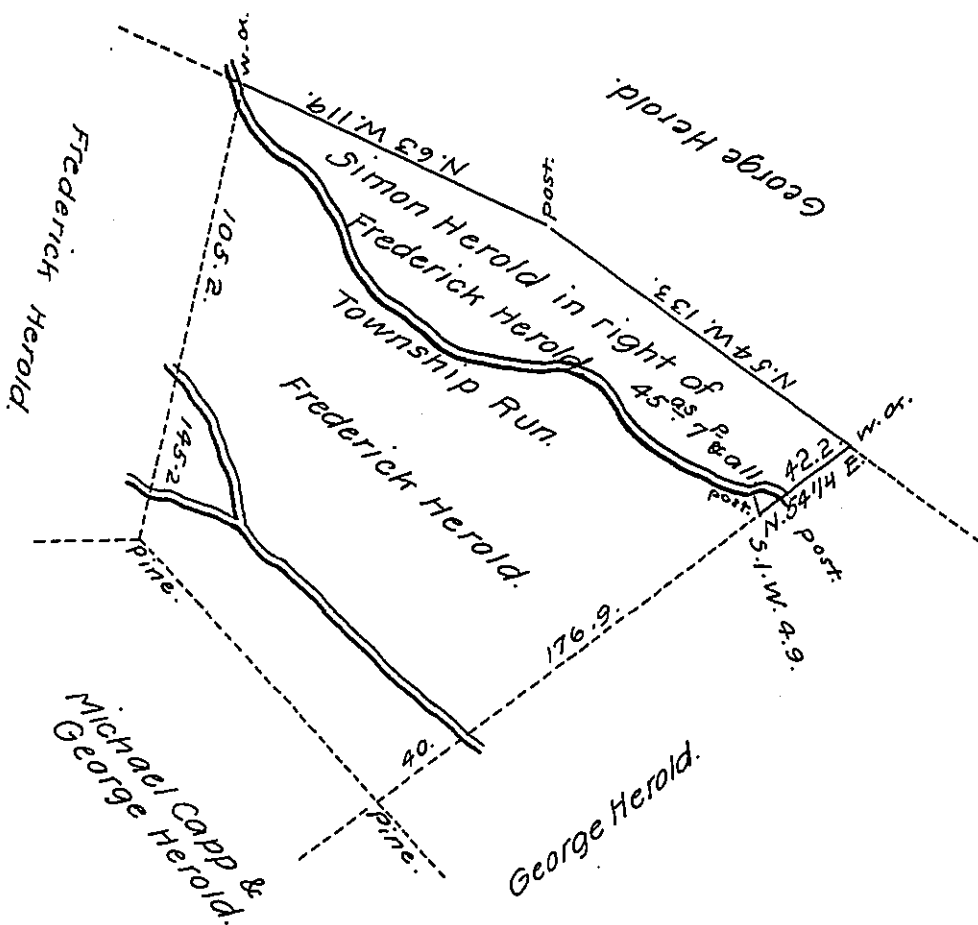


Courses & distances  
down the Run.

- S. 21 3/4 E. .... 11.
- S. 43 1/2 E. .... 32.
- S. 25 1/2 E. .... 30.
- S. 49 . E. .... 22
- S. 71 . E. .... 68.
- S. 40 1/2 E. .... 23.
- S. 22 . E. .... 20
- S. 72 . E. .... 14.
- S. 59 . E. .... 28.
- 248.



A Draught of a tract of land called — situate in Mahantango town-  
ship Union County containing Forty five acres and seven perches and the  
usual Allowance of Six per Cent for roads &c. surveyed the thirteenth day  
of February A.D. One thousand eight hundred and eighteen for Simon Herold  
being part of a larger tract of land which was surveyed for Frederick  
Herold in Pursuance of his warrant bearing date the thirty first day of  
January A.D. One thousand eight hundred and eighteen

To Jacob Spangler Esquire,  
Surveyor General of Pennsylvania

Simon Snyder, Junr, D.S.

IN TESTIMONY that the above is a copy of the original remaining on file in  
the Department of Internal Affairs of Pennsylvania, made  
conformably to an Act of Assembly approved the 16th day of  
February, 1833, I have hereunto set my Hand and caused  
the Seal of said Department to be affixed at Harrisburg,  
this twenty eighth day of February, 1908.

*Henry Houck*  
Secretary of Internal Affairs.